

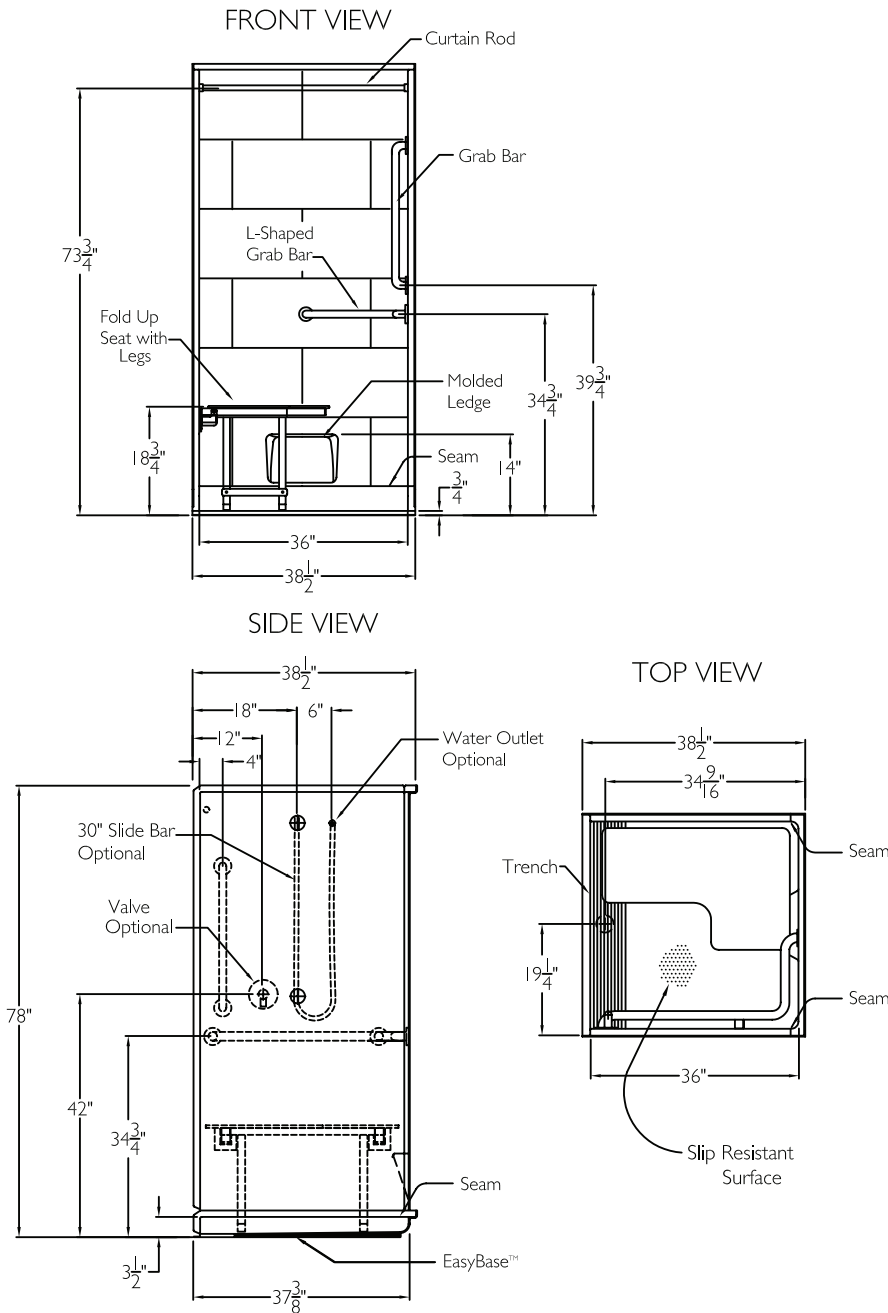
TECHNICAL DATA SHEET

TRENCH DRAIN SHOWER SYSTEM

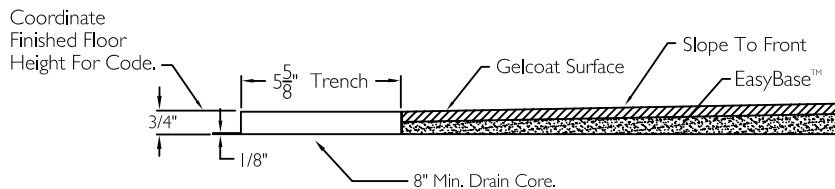
XST3838TR .75 4P L-BAR

ADA/ANSI code compliant

NOTE: For ADA/ANSI compliance, pressure balancing mixing valve, hand-held shower with slide bar, vacuum breaker and 60" hose must be installed per ADA/ANSI guidelines.

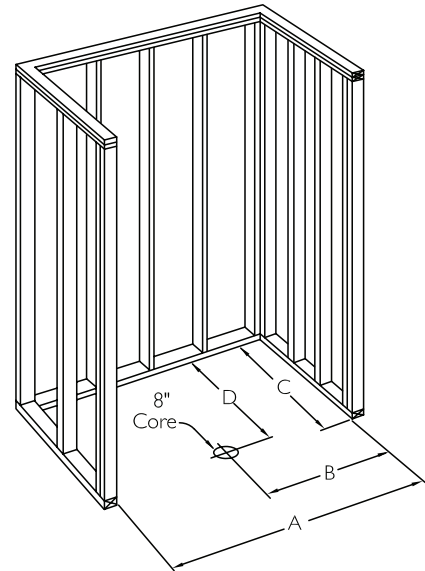


CROSS SECTION OF THRESHOLD



TECHNICAL INFORMATION

- OD 38.5" x 38.5" x 78"
- ID 36" x 36" center point
- LOAD FACTOR .66
- HANDED BY Valve Wall



FRAMING DIMENSIONS

- A 38.75" B 19.375"
- C 38.5" D 34.5"

ADDITIONAL CODES

ICC/ANSI 17.1, ANSI 24.2, ADAAG, BOCA, NAHBUPC, Southern Building Code

CODE COMPLIANT
Enhancing Livable Design

