

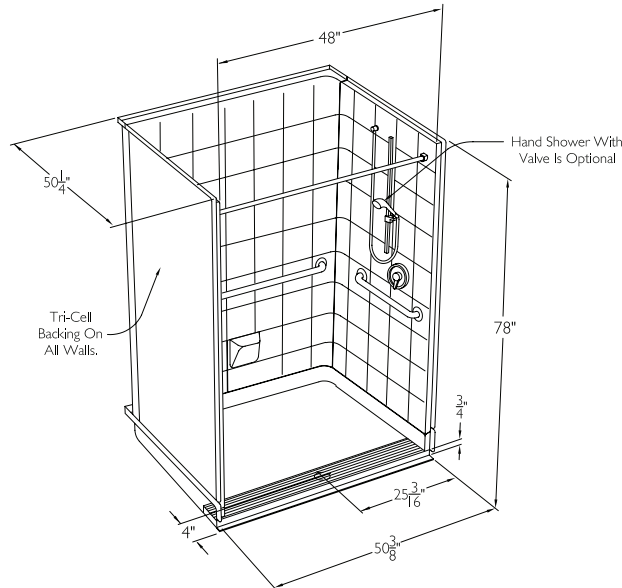
CD Product Sheet

COMMERCIAL CODE COMPLIANT

5050TR U-BAR 5P VA

OD 50.375" x 50.25" x 78"

COMFORT PACKAGE 5050TR U-BAR 5P VA-I shown in drawing



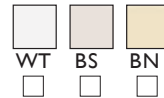
STANDARD FEATURES

Integral Trench Drain
AcrylX™ finish- 30 year limited warranty
GripSure textured floor

NOTICE OF LIMITATION

Recess as needed to meet code
Adhere to floor as required
VA unit is NOT ADA Compliant.

FINISH COLOR SELECTION (Check One)



ACRYLX™: WT-white, BN-bone, BS-biscuit

VETERAN'S ADMINISTRATION
Enhancing Livable Design

VA COMPLIANT PACKAGES (Check One)

Includes standard features plus listed features.

*NOTE: Plumbing is not included in VA package. To add plumbing use modify package options below and select valve and shower assembly.

- ACRYLX™ VA**
XST5050TR U-BAR 5P VA-I
integral trench drain, white U-bar configuration and vertical bar; white shower rod with cups, Tri-Cell backing

BUILD TO ORDER BASE MODELS

Standard features only. All additional options must be selected from modify package options list.

- ACRYLX™ BASE MODEL**
XST5050TR

MODIFY PACKAGE OPTIONS

After selecting base model or prepackaged model, select modify package options to add or change options. Add nomenclature in bold to prepackaged model number. Example: MODEL#-I-PB for pressure balancing mixing valve option.

- | | | |
|---|---|---|
| WALL REINFORCEMENT | <input type="checkbox"/> TC Tri-Cell honeycomb | <input type="checkbox"/> FWB Full wood backing |
| | <input type="checkbox"/> FBP Future placement for bars/seats | |
| U-BAR CONFIGURATION | <input type="checkbox"/> UW ComfortCare™ 1.25 white | <input type="checkbox"/> CUS ComfortCare™ 1.25 stainless |
| VERTICAL GRAB BAR | <input type="checkbox"/> VW ComfortCare™ 24" white | <input type="checkbox"/> CVS ComfortCare™ 24" steel |
| CURTAIN ROD | <input type="checkbox"/> CRW Curtain rod/cups white | <input type="checkbox"/> CRS Curtain rod/cups stainless steel |
| CURTAIN | <input type="checkbox"/> CPW Polyester weighted white | <input type="checkbox"/> CVW Vinyl weighted white |
| VALVE & SHOWER ASSEMBLY | <input type="checkbox"/> PB Pressure balancing mixing valve (ADA/ANSI) | <input type="checkbox"/> HH Hand held shower assembly with slide bar, vacuum breaker and 60" hose (ADA/ANSI) |
| WATER DAM | <input type="checkbox"/> CD Collapsible dam white | |
| DRAIN | <input type="checkbox"/> DR Drain no caulk brass | |
| P3 | <input type="checkbox"/> P3 P3 Armorshield | |
| <small>*not available on solid surface models</small> | | |
| ANTIMICROBIAL | <input type="checkbox"/> SS SmartSilver | |
| TRIM | <input type="checkbox"/> TK Trim Kit | |

cd
comfortdesigns

comfortdesignsbathware.com | 800.443.7269